

Installation Instructions for the Rotary-Type Actuator Levers

PK 85261

Step 1 - Ensure you have the following:

- Actuator lever (Figures 1 and 2 show two different styles)
- (1) Hexagon locking nut (included with lever)
- (1) Flat plain washer (included with lever)
- Switch

Step 2 - Assemble actuator lever on switch shaft:

- Determine approximate lever operating position.

CAUTION

Forcing the lever on the switch shaft will damage the lever or the shaft.

- Carefully place lever on shaft, engaging serrations – the internal taper on lever and the external taper on shaft allows lever to fit only one way.

Step 3 - Adjust actuator lever (may be adjusted to an infinite number of positions through 360°):

CAUTION

Actuator lever must be in the free position while adjusting. Any operating pressure on lever while adjusting may permanently damage the adjusting mechanism.

Actuator lever style 1:

- With slot-head screwdriver, turn lock screw until lever is in desired position.

Actuator lever style 2:

- With slot-head screwdriver, loosen both non-removable lock screws.
- From either side, insert a 3/32 in. Allen wrench in the hexagon hole in the worm gear. Turn worm gear until lever is in desired position.

Step 4 - Secure actuator lever in position (see Figures 3 and 4):

- Tighten lock screw(s) on lever.
- Place washer then locking nut on switch shaft.
- Tighten locking nut to 20-25 in.-lbs. torque.
- Lockwire the lever using the 0.037 in. dia. holes located on the lever lock screw(s).

CAUTION

If lever removal is necessary, use a gear puller. Do not pry on lever as shaft bending may result.

Figure 1: Actuator lever style 1

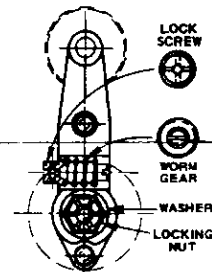


Figure 2: Actuator lever style 2

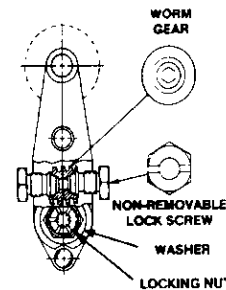


Figure 3: Side view of actuator lever style 1 mounted on switch

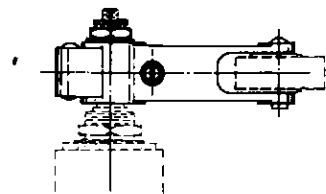


Figure 4: Side view of actuator lever style 2 mounted on switch

